

Kiwanis International Youth Protection

Get educated! Youth protection policies in practice
for clubs

October 2022





Training Objectives

- Why Youth Protection Matters
- Kiwanis Youth Protection (ABCs)
 - Accessible Education and Training
 - Background Checks
 - Culture of Care
- Tips for Club Success
- KI Contact information



Why Youth Protection Matters

- Through KYP, Kiwanis serves over 300,000 youth program members each year
- During childhood across all ages and socioeconomic levels:

➤ 1 in 4 Girls 

➤ 1 in 13 Boys 

➤ experience child sexual abuse

Why Youth Protection Matters

Experiencing child sexual abuse can result in

- short- and long-term physical,
- mental, and
- emotional health consequences like posttraumatic stress disorder (PTSD), substance abuse, and increased risk for suicide or suicide attempts,
- increased risk of re-victimization, and
- are at twice the risk of intimate partner violence (IPV) later in life



Source: <https://keep-kids-safe.org/>





Why Youth Protection Matters



Abusers have in common:

- Privacy
- Access
- Control

Abuse is usually at the hands of a known acquaintances and family member NOT strangers

- More than 90% of abusers are people children know, love and trust
- 85% of child abuse victims never report their abuse



Why Youth Protection Matters

- Who? → • Youth from every socio-economic, ethnicity, gender, big or small community
- What? → • Prevent adult to youth abuse and peer to peer abuse
- When? → • Anytime, any access
- Where? → • Private spaces: 1 on 1 interactions, bathrooms, cars/buses, hotels, etc.
• Online: email, social media, gaming, etc.



Kiwanis Student & Youth Protection Goals

Protect, educate and engage all Kiwanis members youth and adult.

1. Protect youth members from predators
2. Empower and educate adult members with best practices when working with youth
3. Provide youth with positive skills development tools designed to inspire and engage our future leaders to be their best



Youth Protection ABCs

- ✓ **A – Accessible, high quality training and resources**
 - ✓ **B – Background Checks and Beyond**
 - ✓ **C – Culture of Care**





Accessible Training YP Policy

Education

- Every Kiwanis club is expected to inform and educate its members on these guidelines.
- Club secretaries should report training completed on Kiwanis Connect/Secretary Dashboard

Club PR and Marketing Chair

Our club has received Youth Protection Guidelines training.

Service Leadership Programs



YOUTH PROTECTION POLICIES & PROCEDURES (effective February 2020)

These policies can be found in Kiwanis International Policies and Procedures as Procedure 432.

All adults working with youth under the age of 18 at any Kiwanis event are required to read/understand, agree to and abide by these policies.

Education: Every Kiwanis club is expected to inform and educate its members on these guidelines, best practices and required actions for individuals who become aware of youth in potentially harmful situations. This education must occur annually, including providing a copy of these guidelines to each club member. Every Kiwanis district is expected to provide an educational forum or workshop at every district-produced convention and conference regarding guidelines and best practices for adults working with youth, using materials provided by Kiwanis International.

Chaperone: A chaperone is defined as a Kiwanis member, faculty member, parent, legal guardian or person who is in loco parentis, twenty-one (21) years of age or older, who has been approved by the school or agency and registered with the school or agency to accompany the youth members at the specific event.

Chaperone addition (Effective May 1, 2020): A minimum of one adult per 10 students must be serving as chaperones during the entirety of the event. All chaperones (club members and non-members) participating in any single-day or overnight service leadership program event must have a clear criminal history background check and must have completed Kiwanis International annual youth protection training. Additionally, chaperones must follow all applicable policies and procedures. (See also Procedure 432.)

Criminal history background checks: Kiwanis International requires clubs to have a clear criminal history background check for any club member serving as an advisor to any Service Leadership Program club. The check must be conducted and verified by Kiwanis International. Persons without a clear criminal history background check may not serve as the advisor. Approved background checks shall be valid for no more than two years. Kiwanis advisors shall acquire a new criminal history background check upon their initial appointment to the position.

District administrators for Service Leadership Programs (Effective May 1, 2020): Kiwanis International requires all SLP district administrators to complete an application process, which includes submission of a completed application, having a clear background check conducted and verified by Kiwanis International and completion of Kiwanis International youth protection training and any other elements that may be required by Kiwanis International. After receipt of an individual's application and verification of all required elements, Kiwanis International will review the information and decide, in its sole and absolute discretion, whether the individual is accepted to become an SLP district administrator. Kiwanis has no obligation to allow an individual to become an SLP district administrator based solely on a "clear" background check. Denial may be appealed via the process outlined in Procedure 197.

Overnight events (Effective May 1, 2020): All adults (club members and non-members) registered for or staying overnight at any Service Leadership Program event must have a clear criminal history background check and must have completed Kiwanis International annual youth protection training. However, parents/guardians of participating students who are not chaperones may attend the event for a maximum of one overnight stay without a criminal history background check.

Accessible Training YP Policy



Why Prevention Education is Important

When those who would do harm to youth know youth have been educated on this topic, they are less likely to target those youth.

Everyone needs to know the rules about what is OK and what is not OK for adults to do.

When adults know information, they can share it with youth.

Increases the number of disclosures, which leads to interrupting additional abuse and to more youth getting the help they need.



Accessible Training

Online on-demand training and materials



RECORDED WEBINARS



POWER POINT SLIDE
DECK

A screenshot of the Youth Protection website interface. At the top, the title 'YOUTH PROTECTION' is displayed in large, bold, orange letters. Below the title, there are several paragraphs of text in a smaller font. Underneath the text, there are six dark blue buttons with white text, arranged in two rows. The first row contains 'BACKGROUND CHECKS', 'YP TRAINING', and 'POLICIES AND PROCEDURES'. The second row contains 'CULTURE OF CARE', 'HELPLINE', and 'YOUTH PROTECTION WEEK'. Below these, there are two more dark blue buttons with white text: 'BLOGS' and 'HELP'. At the bottom of the screenshot, the URL 'www.Kiwanis.org/youthprotection' is displayed in black text.

YOUTH PROTECTION

As the premier provider of youth service clubs and programs, Kiwanis International holds itself and its members to the highest standards of conduct and awareness.

Each year, more than 300,000 youth take part in Kiwanis Service Leadership Programs like K-Kids, Builders Club and Key Club. And Kiwanis reaches millions more youth around the world through club and district service projects. When we work with and mentor youth during projects and activities, their care and welfare are entrusted to us.

Kiwanis members must know how to protect the youth with whom we interact. When we all share this commitment, we also protect ourselves and the organization we value.

Kiwanis International has taken extensive action to equip Kiwanis clubs, districts and Service Leadership Programs with the tools to provide safe and secure environments for youth.

BACKGROUND CHECKS **YP TRAINING** **POLICIES AND PROCEDURES**

CULTURE OF CARE **HELPLINE** **YOUTH PROTECTION WEEK**

BLOGS **HELP**

www.Kiwanis.org/youthprotection



Accessible Training

In-person convention workshops



DISTRICTS SHOULD HAVE FORUMS OR WORKSHOPS AT CONVENTIONS AND CONFERENCES.



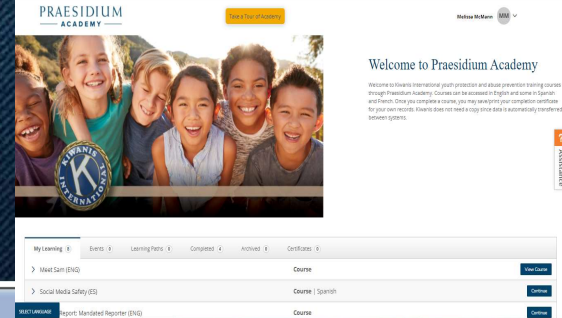
DISTRICT YOUTH PROTECTION MANAGERS CAN TRAIN CLUBS VIRTUALLY/IN-PERSON





Accessible Training

Self-paced online Praesidium abuse prevention courses



SLP DAs, Advisors, YP/Risk Mgrs.

- Good for 2 years
- Should complete 6 online courses
 1. *Abuse Risk Management for Volunteers*
 2. *Social Media Safety*
 3. *Meet Sam*
 4. *It Happened to Me*
 5. *Duty to Report*
 6. *Preventing Sexual Activity Among Adolescents (CKI/Key Club/Builders) or *Safety Equation (K-Kids)*

Non-Members chaperones

(District Area/Zone Admins,
faculty, parent, spouse)

- Good for 2 years
- Should complete 3 chaperone level courses
 1. *Abuse Risk Management for Volunteers*
 2. *Social Media Safety*
 3. *Preventing Sexual Activity Among Adolescents*

Non-Advisor Members

(Govs, LTGs, club officers,
members)

- Good for 2 years
- Can complete 3 chaperone level courses
 1. *Abuse Risk Management for Volunteers*
 2. *Social Media Safety*
 3. *Preventing Sexual Activity Among Adolescents*



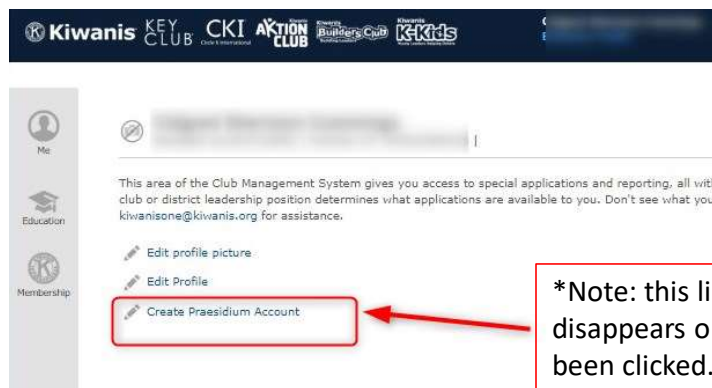
How to Login to Praesidium Academy

Kiwaniis (non-advisor) members can self-initiate a learner account in Praesidium Academy by:

1. In Kiwanis Member portal, click “Create Praesidium account”

2. Check your email for invitation to access account.

3. Click on forgot password to create a new password



*Note: this link disappears once it has been clicked.



Praesidium Academy – Learner Dashboard



My Learning 3	Completed 4	Certificates 4
> Preventing Sexual Activity Between Adolescents (ENG)	Course	Continue
> Duty to Report: Mandated Reporter (ENG)	Course	Continue
> Social Media Safety (ES)	Course Spanish	Continue

Browse

Search for content Filter by ▼ Sort by ▼ ☰ ☰ ? Assistance

- Program/Role
 - Work With Youth (9)
 - Volunteers (2)
 - Leadership (1)
 - Work With Adults (1)

> Language

English

ENGLISH

Preventing Sexual Activity Between Adolescents (ENG)
Course
In this course, you will learn techniques and best practices to prevent and...

[Continue](#)

ENGLISH

Safety Equation Series: Monitoring and Supervision (ENG)
Course
Effective monitoring and supervision are vital to keeping those in your car...

[Start Course](#)

ESPAÑOL

Social Media Safety (ES)
Course
Spanish
La seguridad en las redes sociales es un tema clave para quienes trabajan c...

[Continue](#)



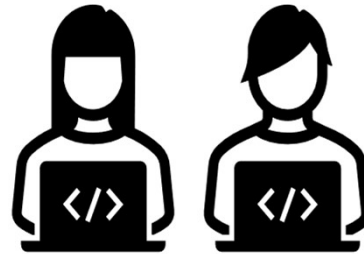
SLP District Admins & Kiwanis Advisors



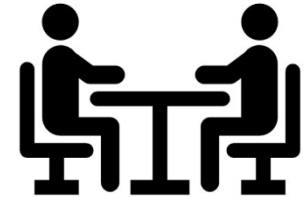
Must have a cleared and current Kiwanis background check on file with Kiwanis when chaperoning single-day off school premises or overnight SLP event.



Review & Follow all Kiwanis Youth Protection policies & procedures



Complete 6 online Youth Protection Praesidium Training courses.



Monitor and Supervise students

Report red-flag incidents to SLP event coordinators.



SLP Chaperones

Kiwanis Member/Non-members

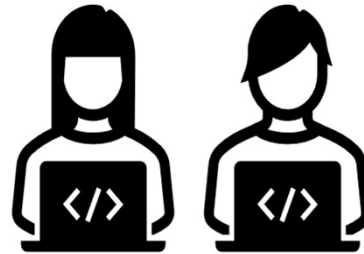


Must have a cleared and current Kiwanis background check on file with Kiwanis when chaperoning single-day off school premises or overnight SLP event.



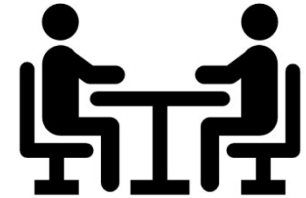
Review & Follow all Kiwanis Youth Protection policies & procedures

*** Must be 21 years or older**



Complete 3 online Youth Protection Praesidium Training courses.

1. Abuse Risk Mgmt.
2. Social Media Safety
3. Preventing Sexual Activity Among Adolescents



Monitor and Supervise students

Report red-flag incidents to SLP event coordinators.

Chaperone to Student Ratios



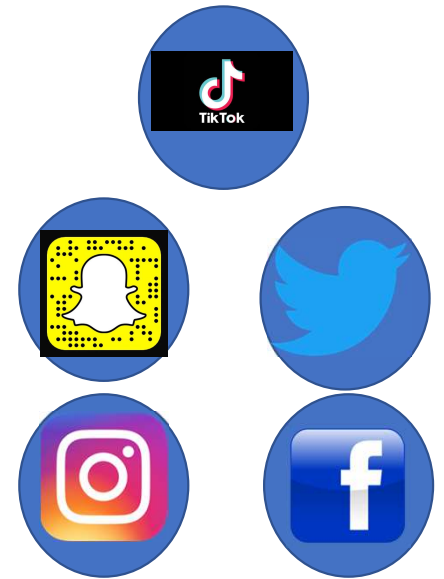
- **Single day SLP event** = A minimum of 1 background checked adult per 50 SLP members
- **Overnight SLP event** = A minimum 1 background checked adult chaperone per 10 SLP members.
 - 1 adult male for each 10 youth males or part of 10 youth males AND
 - 1 adult female for each 10 youth females or part of 10 youth females.
 - Adults **MAY NOT** share sleeping quarters with students unless it is their child.





Youth Protection Social Media & Communication Policy

Social Media Connections	Social Media Connections	Social Posts	Photos	Rule of 3
<p>Never initiate follow, friend, or like posts and pages of individual students.</p>	<p>Connect via a SLP club page/account and not an individual youth member account.</p>	<p>Treat all social posts and interactions as profession, public facing.</p>	<p>Never post pictures of youth on your personal social media pages.</p>	<p>Avoid 1 Student + 1 Adult texts and emails by adding an additional adult on electronic communication, e.g. another advisor/DA, parent or guardian.</p>





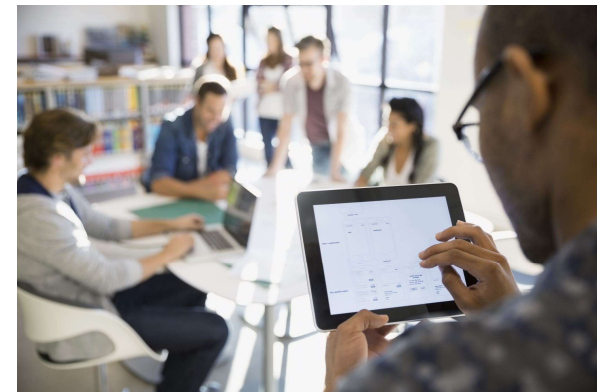
Youth Protection

Safe Virtual SLP Club Meetings

We advise programs to have at least 2-3 background checked adults (advisors or chaperones, etc.) participate in virtual programs, whether these are with small or large groups.

- Regardless if you have 30 youth or 5 youth, the recommendation would be to have **at least 2** adults if possible.

Having at least 2-3 adults discourages any inappropriate one-on-one engagement and can help hold the student members and the other advisors/chaperones accountable to the code of conduct or any other program guidelines.





YP Policy & Practice

- **Transportation Best Practices**

- At least three people in a car.
- Student(s) ride in the back seat/rows.
- Get parent/guardian approval prior to transporting.
- Follow local school and traffic safety laws.



This Photo by Unknown Author is licensed under CC BY-NC-ND



Youth Protection Medication policy

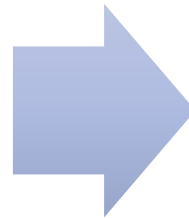
- Possession of prescription and non-prescription medications should only be allowed with *written* permission from parent or guardian.
- During overnight stays, keep parent or guardian signed medical forms safe and accessible for an emergency.





Youth Protection Report Troubling Behaviors

If a Kiwanian observes troubling behavior involving a youth at a Kiwanis event or becomes aware of a situation that is illegal or potentially unsafe for a young person at a Kiwanis event or if the Kiwanian becomes aware of the troubling behavior after the event -



Kiwanian **must** immediately:

- Contact leaders of the event.
- Provide notification to law enforcement personnel as appropriate.
- All local, state, provincial and federal laws regarding reporting must be followed.





Youth Protection Abuse Reporting Helpline

YOUTH PROTECTION HELPLINE 866-607-SAFE (7233)

- Kiwanis International launched dedicated Kiwanis Youth Protection Helpline
 - Staffed 24 hrs./7 days a week by trained professionals
 - Kiwanis SLP and adult members can report inappropriate behavior, abuse or policy violations
 - Calls then routed to Youth Protection team
 - Callers may remain anonymous.



Background Checks Frequently Asked Questions

- Kiwanis contracts with Safe Hiring Solution's – Safe Visitor online application portal.
- Individual email link is sent to email on file. **Check spam folder**
- US\$25 processing fee for SLP advisors, subsidized by KYP.
 - Depending on your country/state court document costs, members and non-members chaperones may pay an additional fee.
- Search county, state/provenance, national, federal criminal records
- Applications may process in 1-2 weeks after Submit weeks in advance of Key Club event
- Good for 2 years.
- Cleared dates are tracked and monitored for compliance.
- Direct bill club or SLP District accounts available





How to Get a Kiwanis Background Check

1. US Kiwanis secretaries can click on 'envelope' icon to generate an individual member link.
2. Canadian Kiwanis secretaries and members request local background/vulnerable service check hard copy and mail it to Kiwanis International to verify.
3. Caribbean/international Kiwanis secretaries and members can request individual links by emailing backgroundchecks@Kiwanis.org

Member Management

Sec. Dashboard **Member Admin** Monthly Report Annual Report Finances

Excel Directory Printable Directory New Member

The Member Management page displays a list of all the current members of your club. Use the tabs below this paragraph to switch between current and former members as needed. Click the appropriate icon in a specific member's row to view, edit or delete the member's information. NOTE: The ability to edit or delete a member's information varies based on what privileges you have in the system. Send an email to memberservices@kiwanis.org if you have any questions.

All Active Corporate Honorary Satellite Former Life Member Spouse Multi Club

Exclude Honorary Members

Show 10 Search:

entries

	Name	Member ID	Email	Details	Edit	Delete	Background Check ?	Renew
1	Susan	Q	✎	🗑	Expires 2021/10/29	
2	Leon12	Q	✎	🗑		
3	Juel79	Q	✎	🗑	Expires 2021/10/29	

Background Check online application portal



Kiwanis International

Welcome to the approval process.

This registration process includes:

Information Collection
Background Check Authorization

Please click the 'Next Step' button to start the process

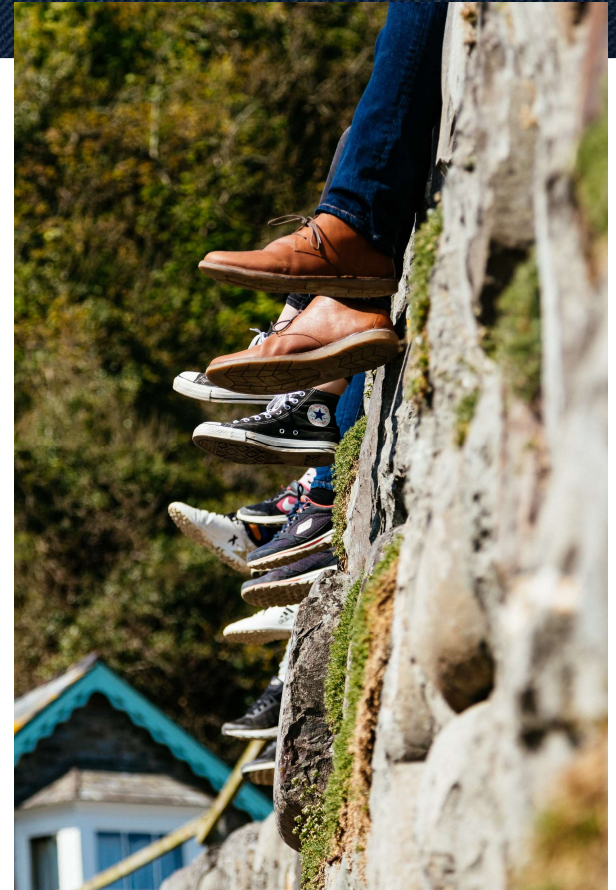
Next Step →





Working Toward the Future

Our goal is to reach & maintain
100% background check
compliance for advisors of all
Kiwaniis Youth Programs.





Culture of Care

What is Creating a Culture of Care?

- Kiwanis Culture of Care initiative provides students with training and resources to be leaders in their school in:
 - preventing bullying,
 - reducing incidences of violence,
 - understanding healthy relationships and
 - personal boundaries and more.





Culture of Care

CKI/Key Club Training & Awareness

- Created CKI and Key Club Culture of Care training curriculum, activities and meeting guides.
- Presented training at
- ICON training workshops
- GATC training workshops
- September – Suicide Prevention Month
- October – Bullying Prevention Month

Culture of Care Workshops

Healthy Boundaries – Out of Bounds

You Talking to Me? Effective Peer Communication

Removing Blindfold: Bystander Intervention 101



Culture of Care

Mental Health Partners & Resources

- CKI + Active Minds
 - Changing the conversation about mental health on college campuses
 - Self-Care resources
- Key Club + Erika's Lighthouse Beacon of Hope
 - Depression education
 - Teen empowerment videos
 - Teen mental health awareness
- Builders Club/K-Kids + Project Happiness
 - Student Handbooks
 - Videos
 - Pay it Forward Activity



Project Happiness

Tips for Club Success



CLUB SECRETARIES SHOULD CONSISTENTLY MONITOR THE BACKGROUND CHECK STATUS OF THEIR CLUB'S KIWANIS ADVISORS. THIS INFORMATION LIVES IN KIWANIS CONNECT.



CREATE A PLAN TO REPLACE KIWANIS ADVISORS, IF NEEDED.



REMIND CLUBS THEY CAN BUDGET ANNUALLY FOR THE \$25 EXPENSE. THIS MAY BE TAKEN FROM EITHER THE ADMINISTRATIVE OR SERVICE ACCOUNT.



Email inquiries & requests



- [Kiwanis.org/youthprotection](https://kiwanis.org/youthprotection)



- Backgroundchecks@Kiwanis.org



- YouthProtection@Kiwanis.org



- CultureofCare@Kiwanis.org